

SkyHomes

Fabergé
COLLECTION

THE
Onyx

6,217 SQ.FT. ELEV. A / 6,201 SQ.FT. ELEV. B

6,733 SQ.FT. ELEV. A with LOFT / 6,715 SQ.FT. ELEV. B with LOFT

INCLUDES 148 SQ.FT. FINISHED BASEMENT



ELEVATION A



ELEVATION B

Note: Orientation of home may be reversed and purchaser agrees to accept the same. Steps may vary at any exterior entrance ways due to grading variance. Actual usable floor space may vary from stated floor area. All renderings are artist's concept. Dimensions, specifications and architectural detailing are subject to minor modifications. Structural post not shown in basement plans. Unit setback and roofline may vary due to siting. All options shown are upgrades. E. & O.E. 70-3

SkyHomes
CORPORATION

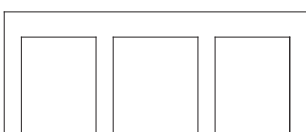
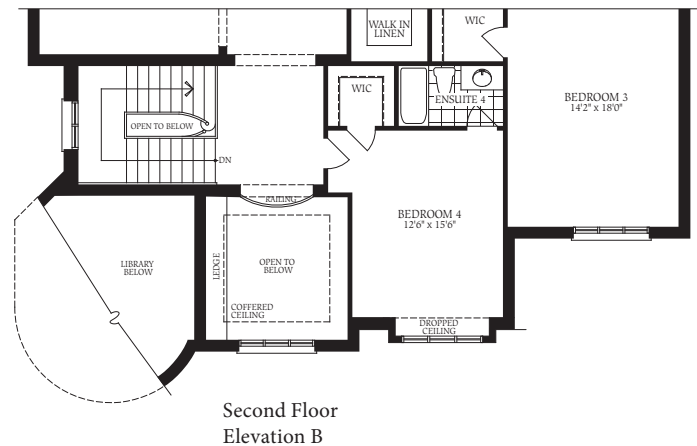
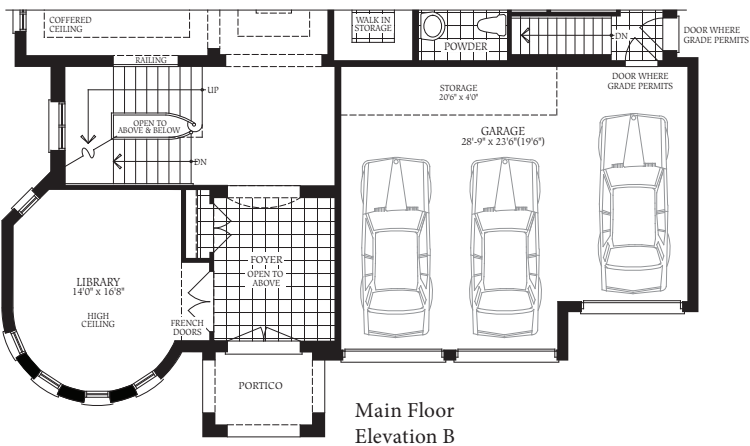
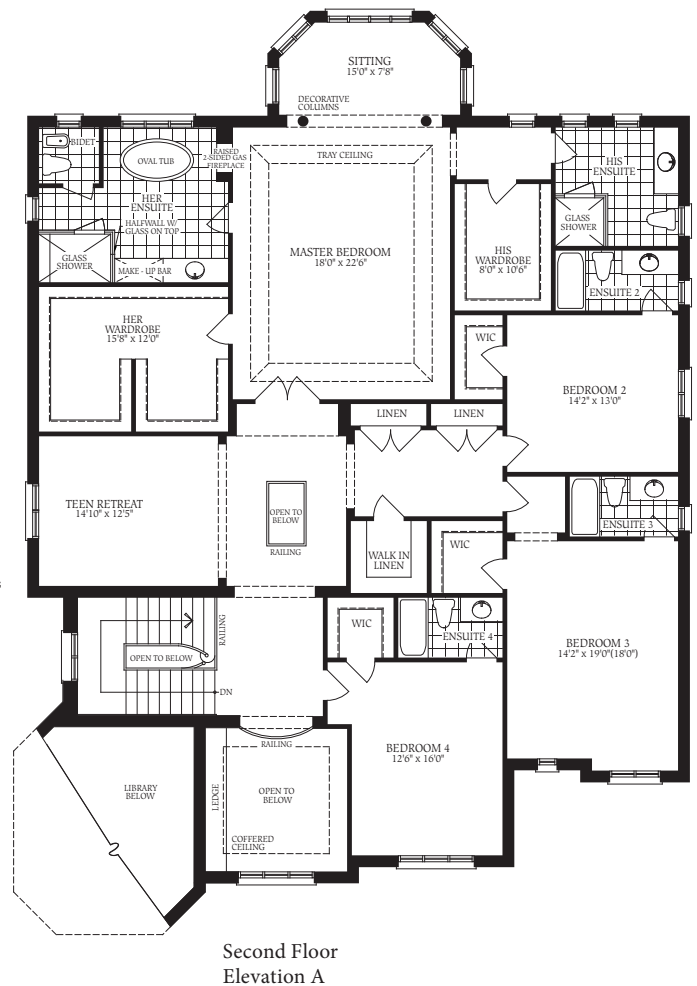
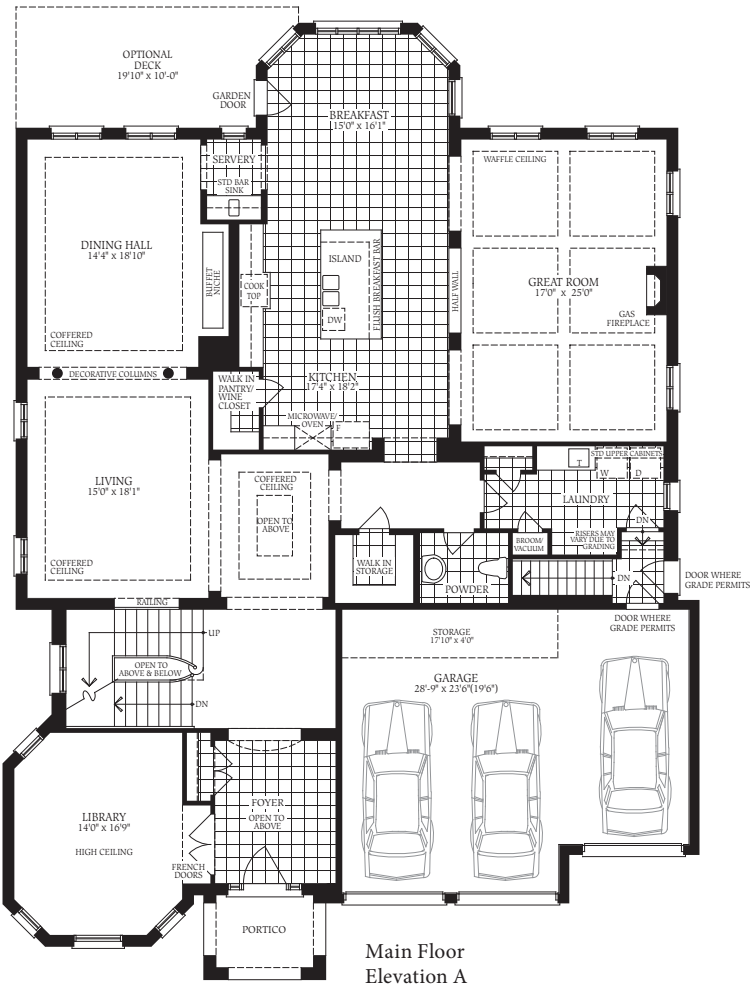
6,217 SQ.FT. ELEV. A / 6,201 SQ.FT. ELEV. B

6,217 SQ.FT. OPT. 5 BED. ELEV. A / 6,201 SQ.FT. OPT. 5 BED. ELEV. B

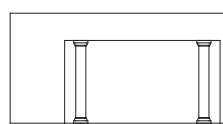
6,733 SQ.FT. LOFT ELEV. A / 6,715 SQ.FT. LOFT ELEV. B

6,733 SQ.FT. LOFT & OPT. 5 BED. ELEV. A / 6,715 SQ.FT. LOFT & OPT. 5 BED. ELEV. B

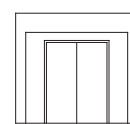
INCLUDES 148 SQ.FT. FINISHED BASEMENT



Elevation of Arch at Great Room



Flat Arch In Master Bedroom



Flat Arch at Master Bedroom

Note: Orientation of home may be reversed and purchaser agrees to accept the same. Steps may vary at any exterior entrance ways due to grading variance. Actual usable floor space may vary from stated floor area. All renderings are artist's concept. Dimensions, specifications and architectural detailing are subject to minor modifications. Structural post not shown in basement plans. Unit setback and roofline may vary due to siting. All options shown are upgrades. E. & O.E. 70-3 February 2016

6,217 SQ.FT. ELEV. A / 6,201 SQ.FT. ELEV. B

6,217 SQ.FT. OPT. 5 BED. ELEV. A / 6,201 SQ.FT. OPT. 5 BED. ELEV. B

6,733 SQ.FT. LOFT ELEV. A / 6,715 SQ.FT. LOFT ELEV. B

6,733 SQ.FT. LOFT & OPT. 5 BED. ELEV. A / 6,715 SQ.FT. LOFT & OPT. 5 BED. ELEV. B

INCLUDES 148 SQ.FT. FINISHED BASEMENT

