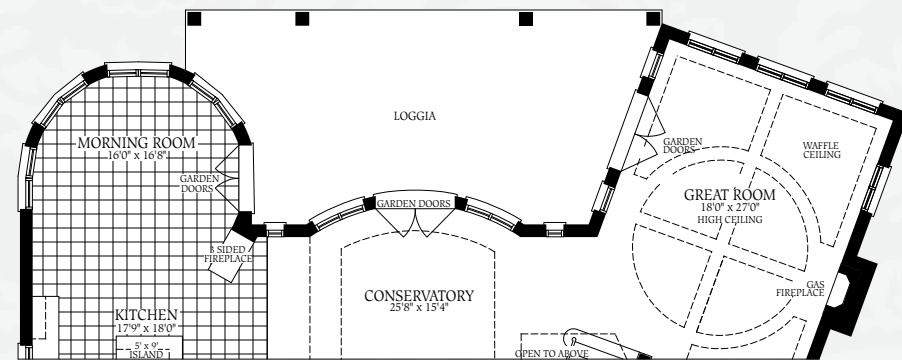


THE MARQUISE

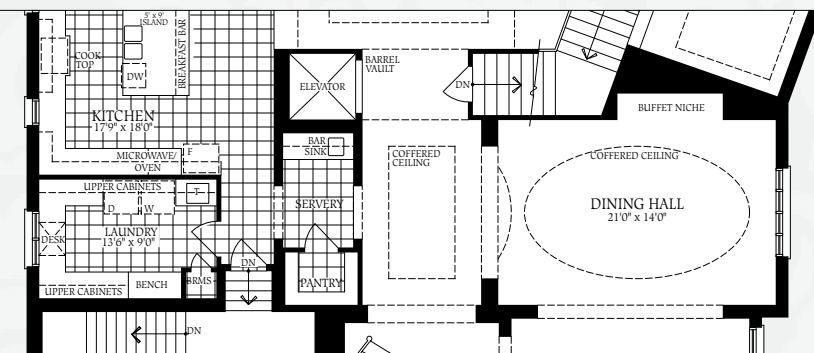
7,015 SQ.FT. - ELEV. A

7,001 SQ.FT. - ELEV. B

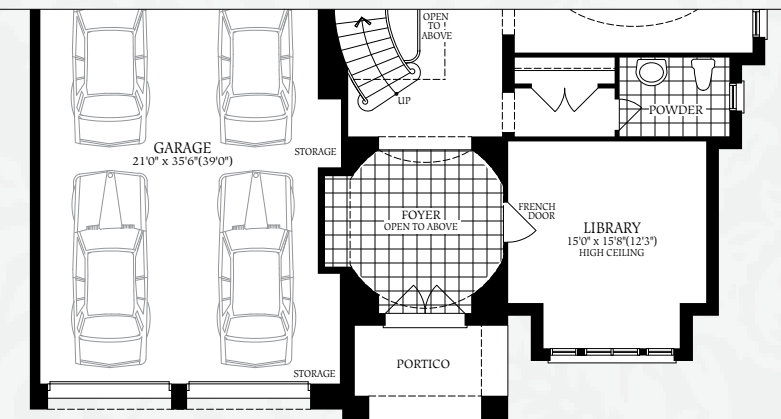
INCLUDES 224 SQ.FT. OF FINISHED BASEMENT



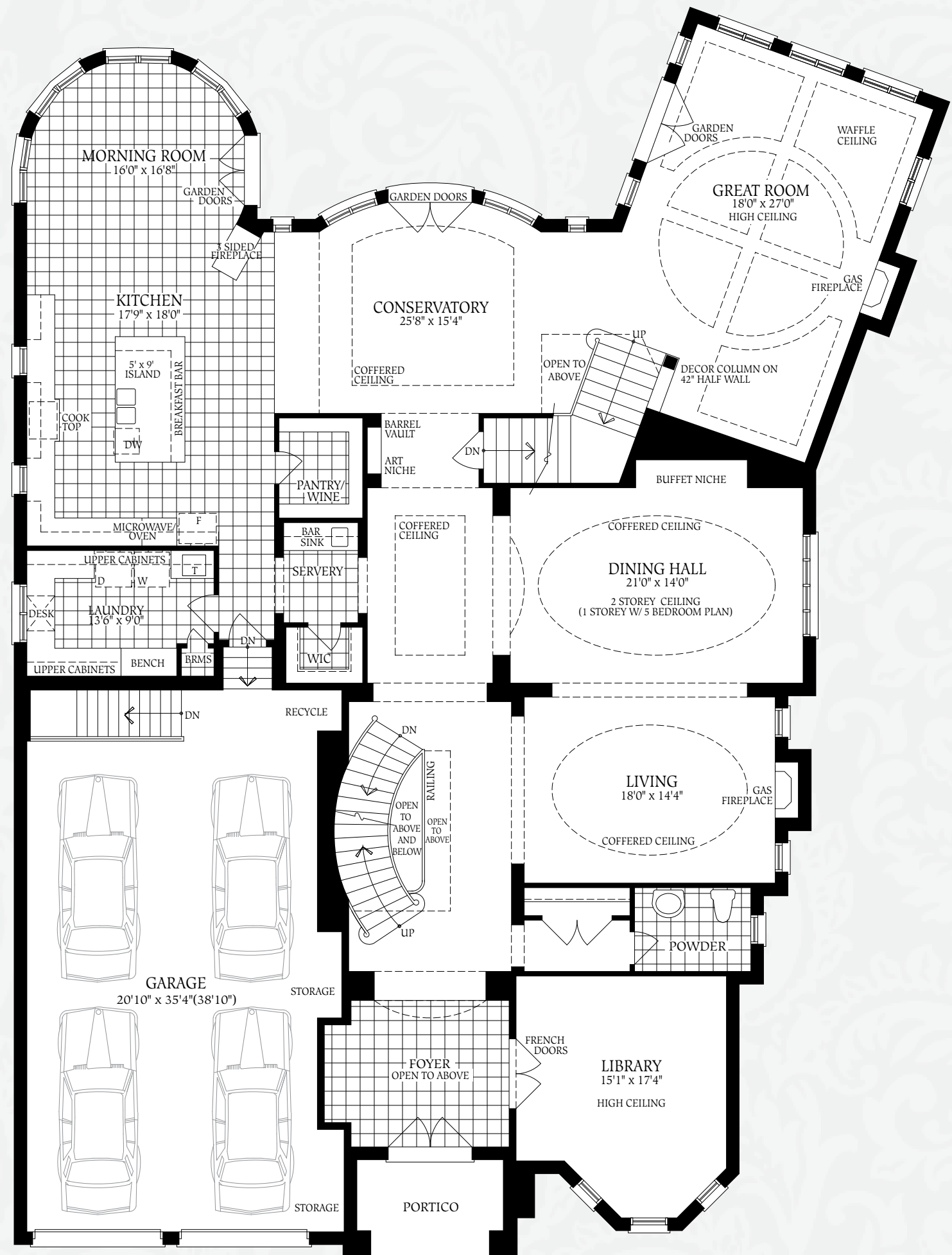
FIRST FLOOR WITH OPTIONAL LOGGIA



FIRST FLOOR OPTIONAL ELEVATOR LAYOUT



FIRST FLOOR ELEVATION B



GROUND FLOOR ELEVATION A

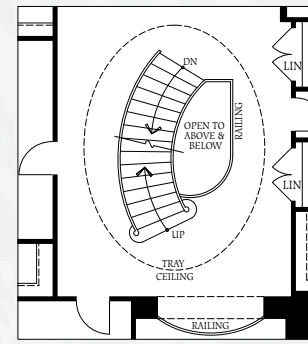


Note: Orientation of home may be reversed and purchaser agrees to accept the same. Steps may vary at any exterior entrance ways due to grading variance. Actual usable floor space may vary from stated floor area. All renderings are artist's concept. Dimensions, specifications and architectural detailing are subject to minor modifications. Structural post not shown in basement plans. Unit setback and roofline may vary due to siting. All options shown are upgrades. E. & O.E. April 2012

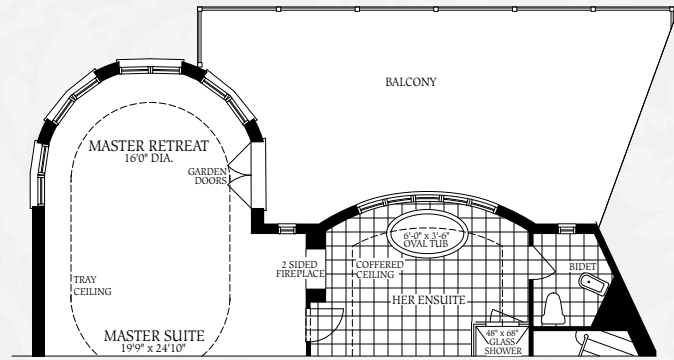
THE MARQUISE



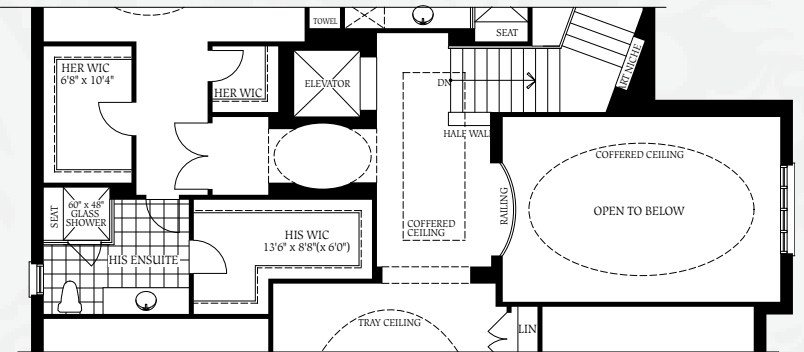
SECOND FLOOR
ELEVATION A



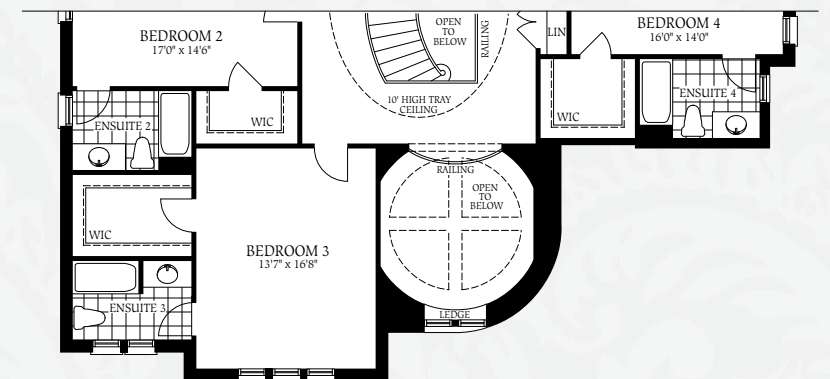
SECOND FLOOR
FOR OPTIONAL LOFT



SECOND FLOOR
WITH OPTIONAL BALCONY



SECOND FLOOR
OPTIONAL ELEVATOR LAYOUT



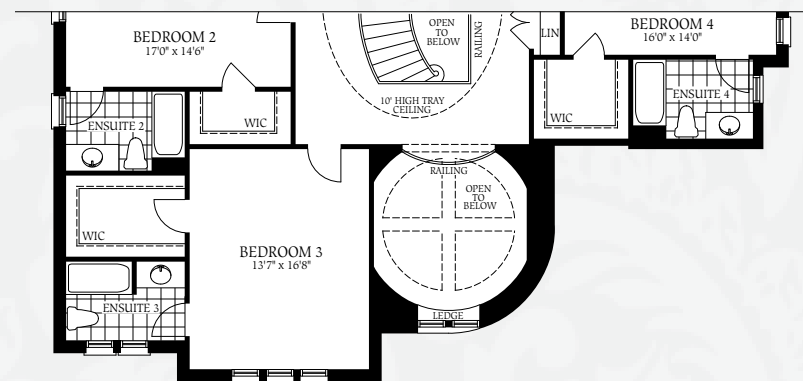
SECOND FLOOR
ELEVATION B

THE MARQUISE

7,015 SQ.FT. - ELEV. A

7,001 SQ.FT. - ELEV. B

INCLUDES 224 SQ.FT. OF FINISHED BASEMENT



SECOND FLOOR
OPTIONAL 5 BEDROOM LAYOUT
ELEVATION B
TOTAL SQUARE FOOTAGE: 7290 SQ.FT.



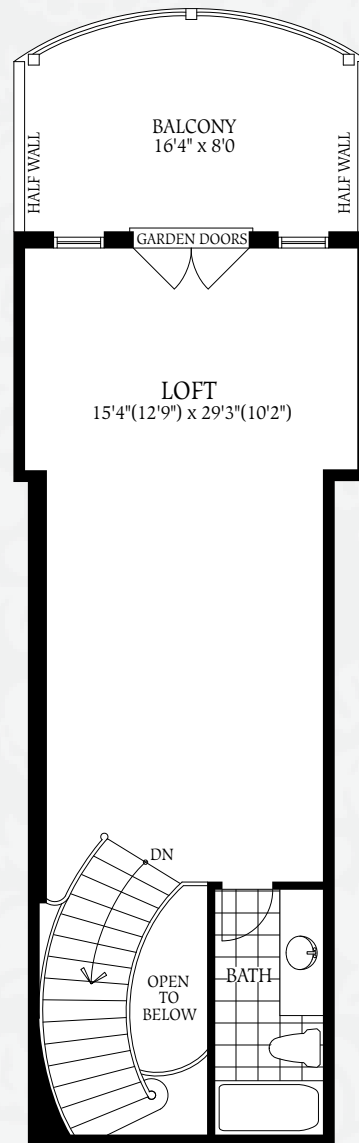
SECOND FLOOR OPTIONAL 5 BEDROOM LAYOUT
ELEVATION A

TOTAL SQUARE FOOTAGE: 7303

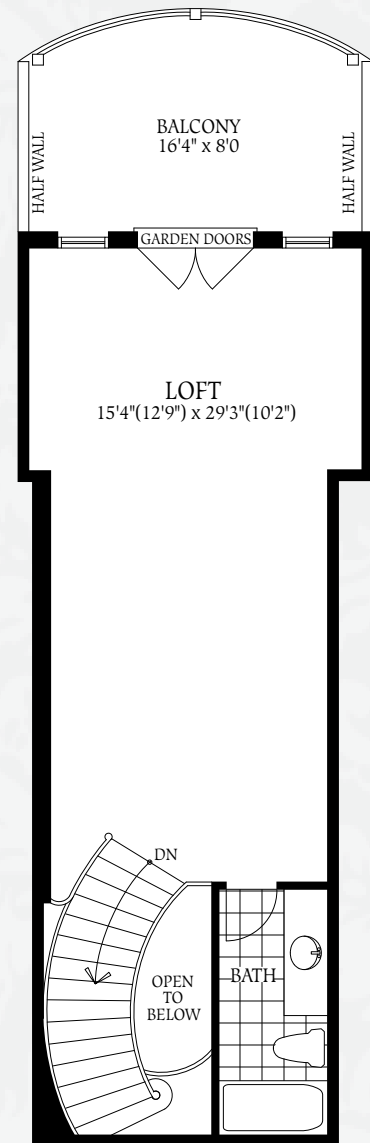


Note: Orientation of home may be reversed and purchaser agrees to accept the same. Steps may vary at any exterior entrance ways due to grading variance. Actual usable floor space may vary from stated floor area. All renderings are artist's concept. Dimensions, specifications and architectural detailing are subject to minor modifications. Structural post not shown in basement plans. Unit setback and roofline may vary due to sitting. All options shown are upgrades. E. & O.E. April 2012

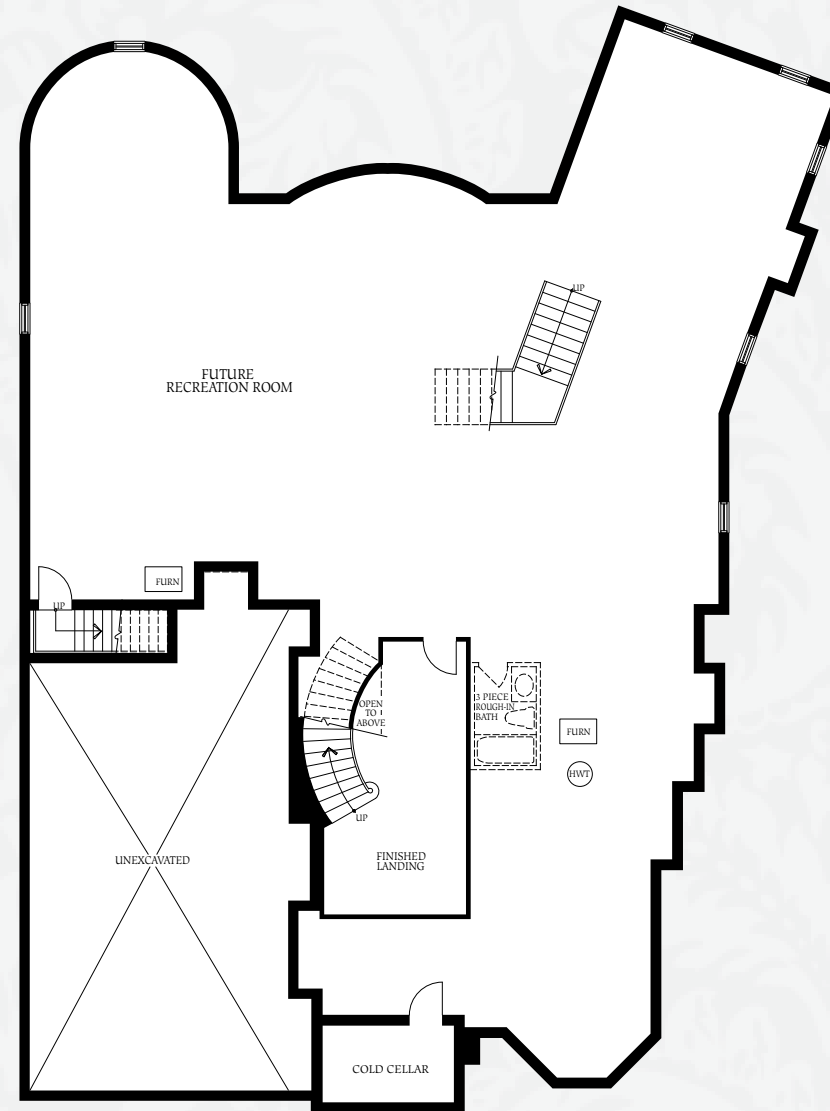
THE MARQUISE



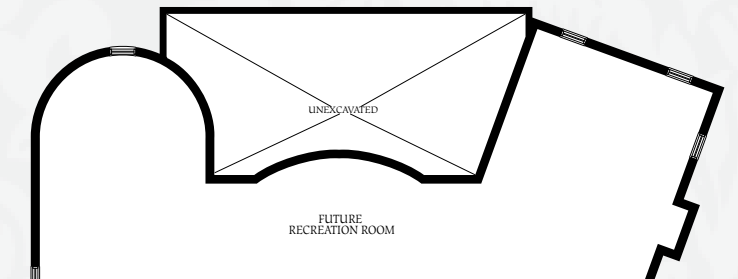
OPTIONAL LOFT



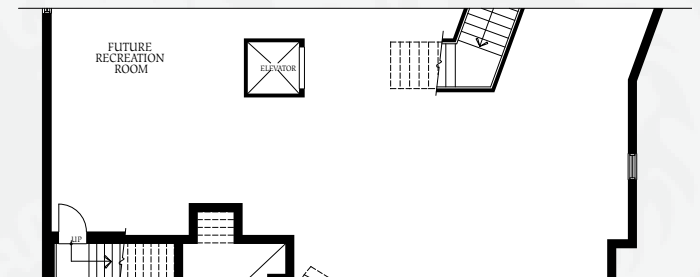
OPTIONAL LOFT PLAN WITH BEDROOM 5



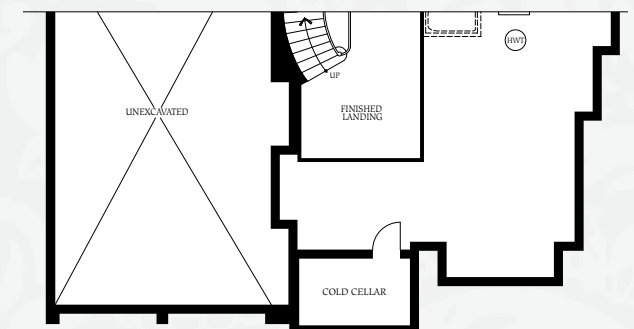
BASEMENT ELEVATION A



BASEMENT FOR OPTIONAL LOGGIA LAYOUT



BASEMENT FLOOR OPTIONAL ELEVATOR LAYOUT



BASEMENT ELEVATION B

TOTAL SQUARE FOOTAGE WITH LOFT:
ELEVATION A: 7,610 SQ.FT.
ELEVATION B: 7,598 SQ.FT.

TOTAL SQUARE FOOTAGE WITH LOFT AND OPTIONAL 5 BEDROOM SECOND FLOOR:
ELEVATION A: 7,899 SQ.FT.
ELEVATION B: 7,886 SQ.FT.