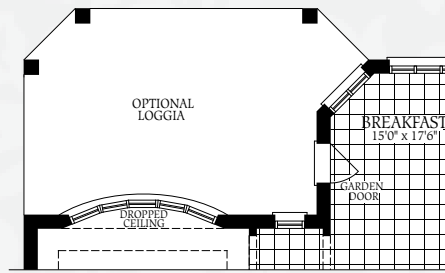


# THE PRINCESS

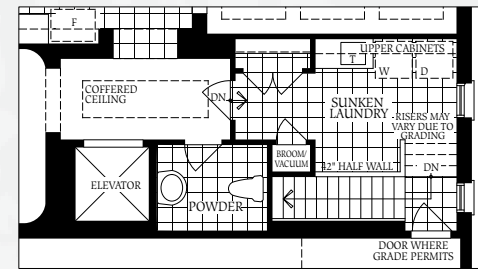
6,154 SQ.FT. - ELEV. A

6,170 SQ.FT. - ELEV. B

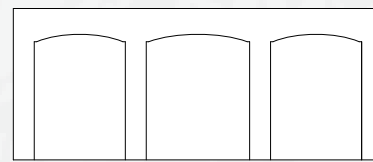
INCLUDES 117 SQ.FT. OF FINISHED BASEMENT



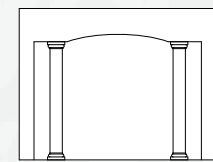
FIRST FLOOR  
OPTIONAL LOGGIA



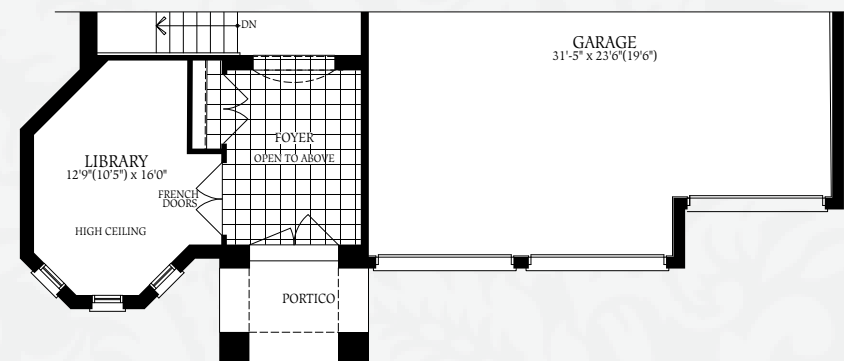
FIRST FLOOR  
FOR OPTIONAL ELEVATOR



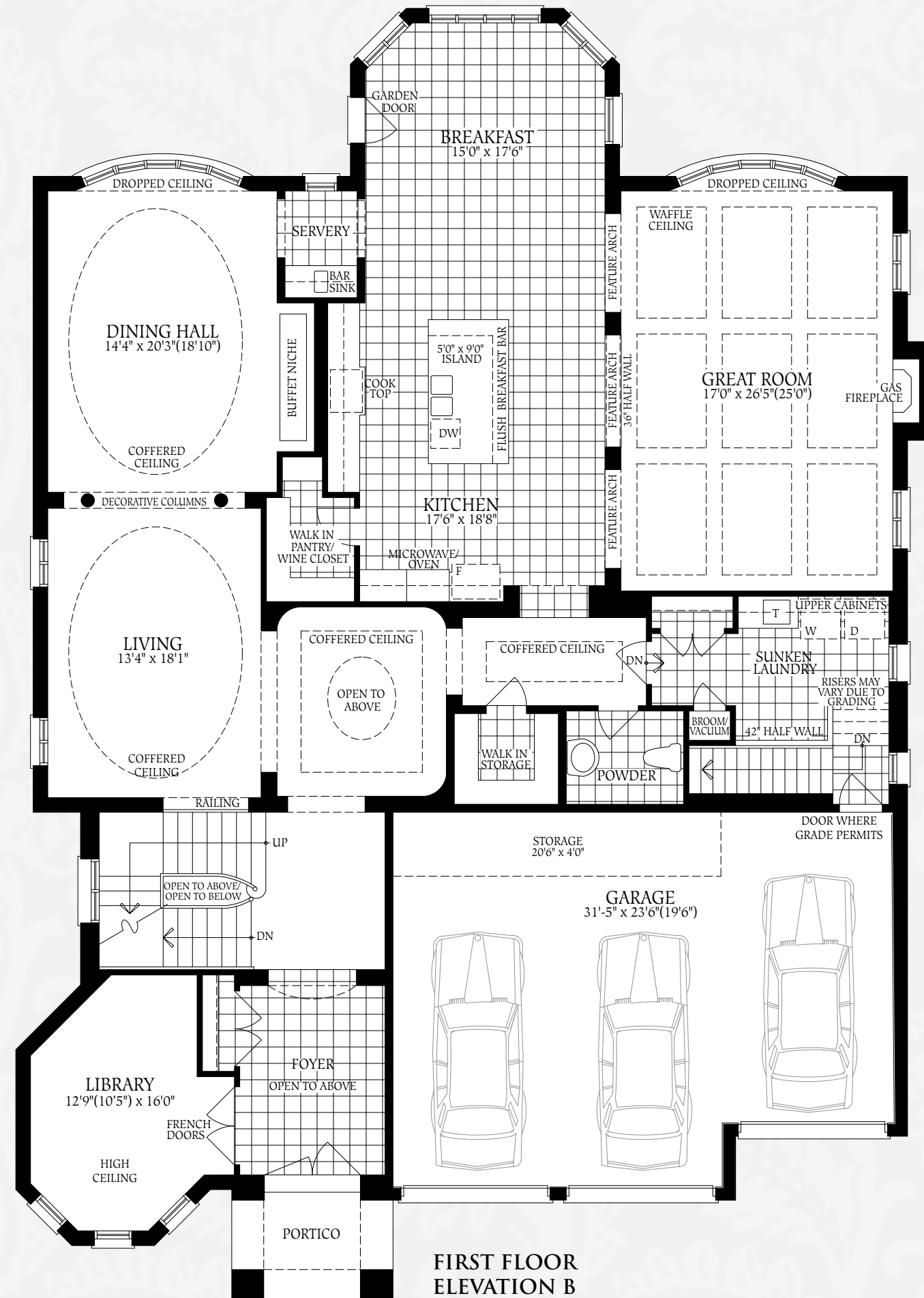
FEATURE ARCH  
AT GREAT ROOM



FEATURE ARCH  
AT LIVING/DINING HALL

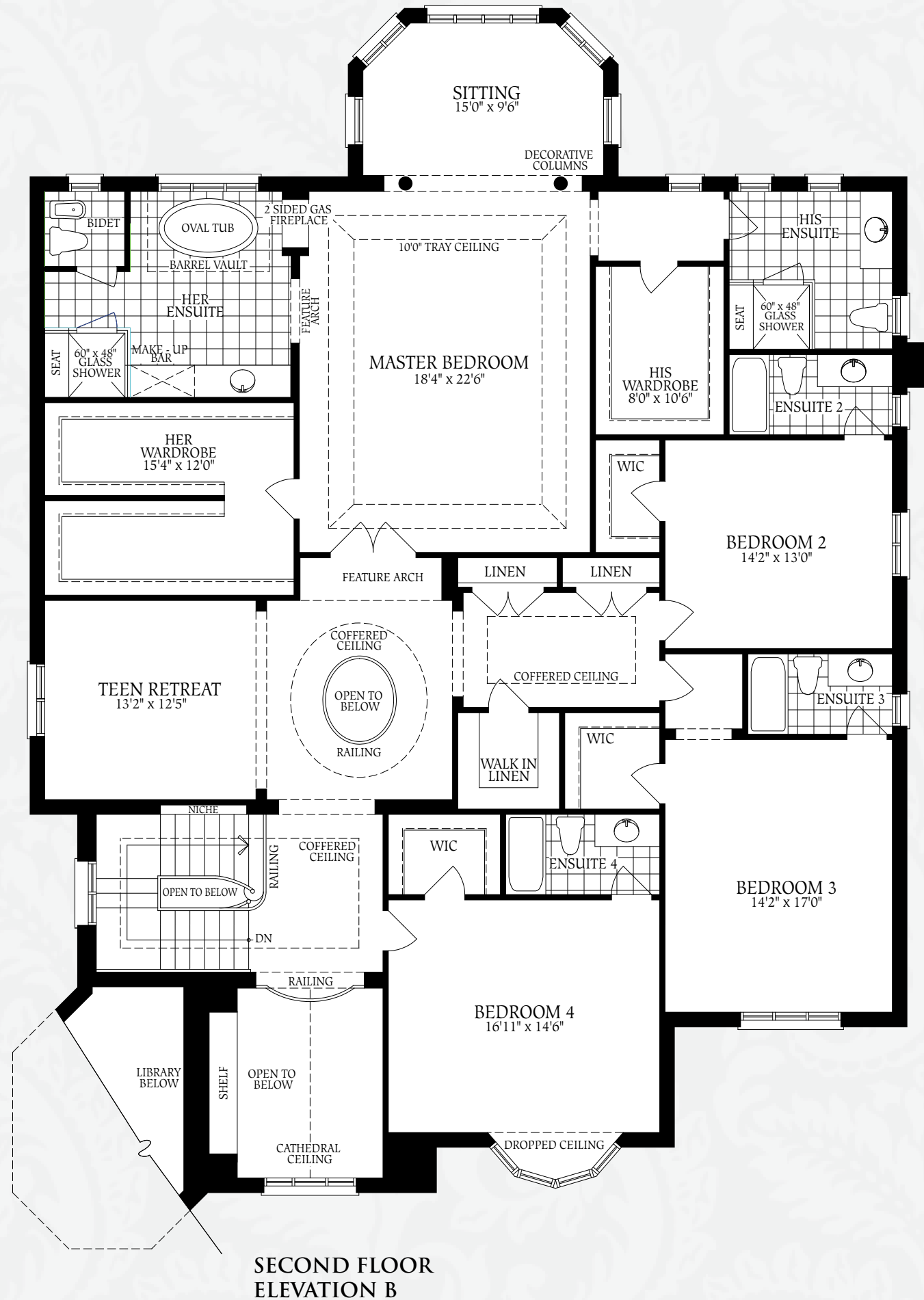


FIRST FLOOR  
ELEVATION A

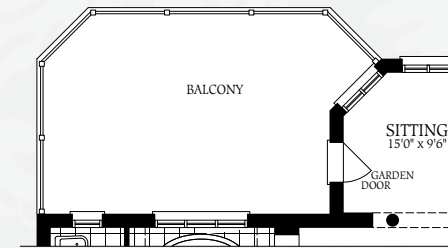


FIRST FLOOR  
ELEVATION B

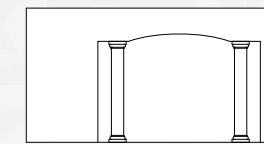
# THE PRINCESS



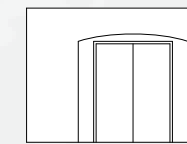
**SECOND FLOOR ELEVATION B**



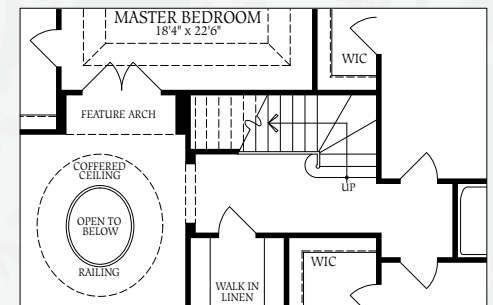
**SECOND FLOOR OPTIONAL BALCONY (FOR OPTIONAL LOGGIA ONLY)**



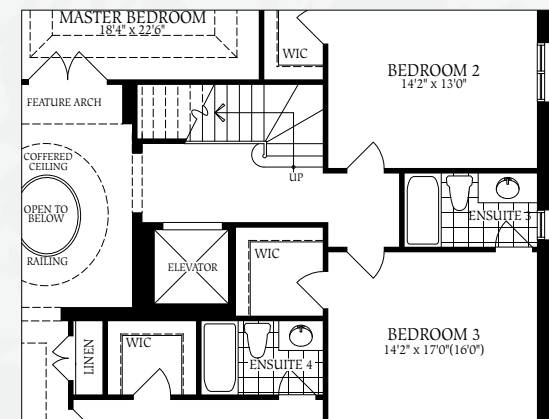
**FEATURE ARCH AT MASTER BEDROOM**



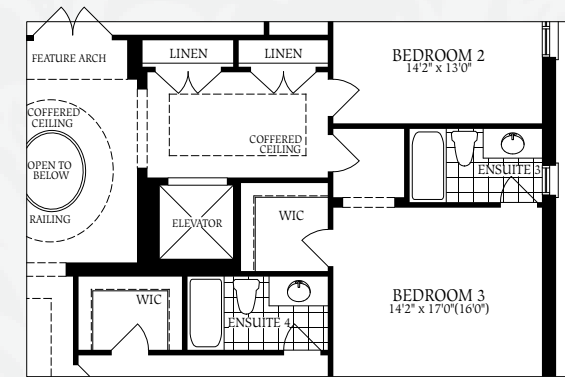
**FEATURE ARCH AT MASTER BEDROOM**



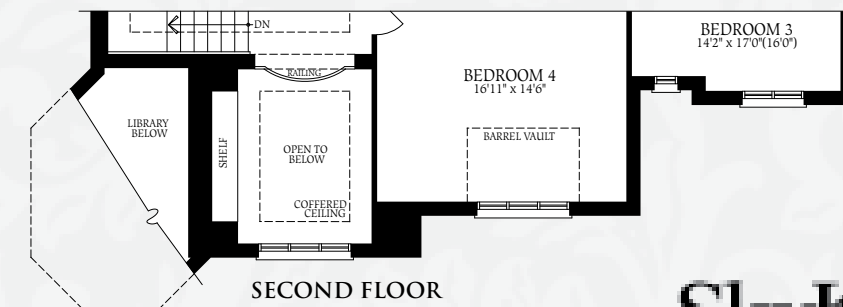
**SECOND FLOOR FOR OPTIONAL LOFT**



**SECOND FLOOR FOR OPTIONAL ELEVATOR AND OPTIONAL LOFT**



**SECOND FLOOR FOR OPTIONAL ELEVATOR**



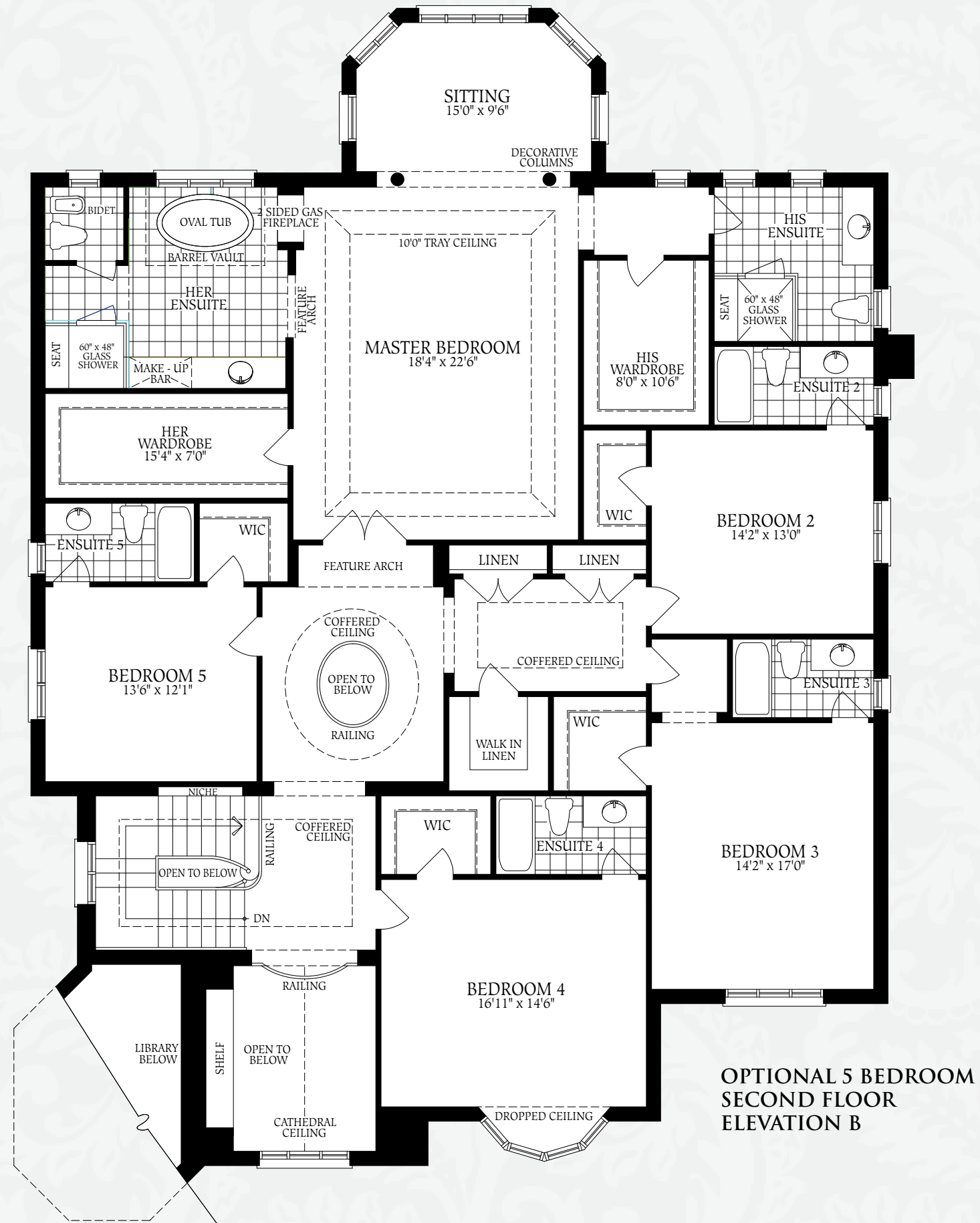
**SECOND FLOOR ELEVATION A**

# THE PRINCESS

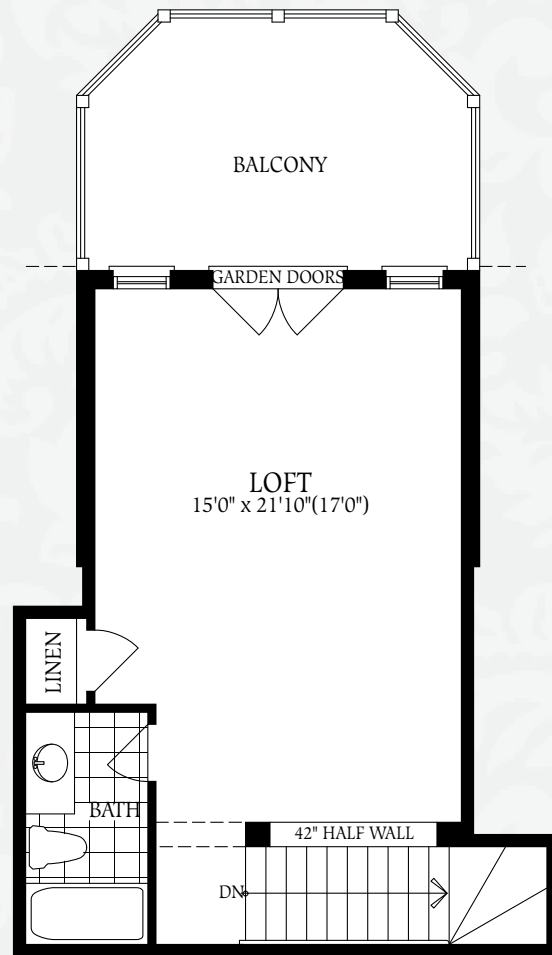
6,154 SQ.FT. - ELEV. A

6,170 SQ.FT. - ELEV. B

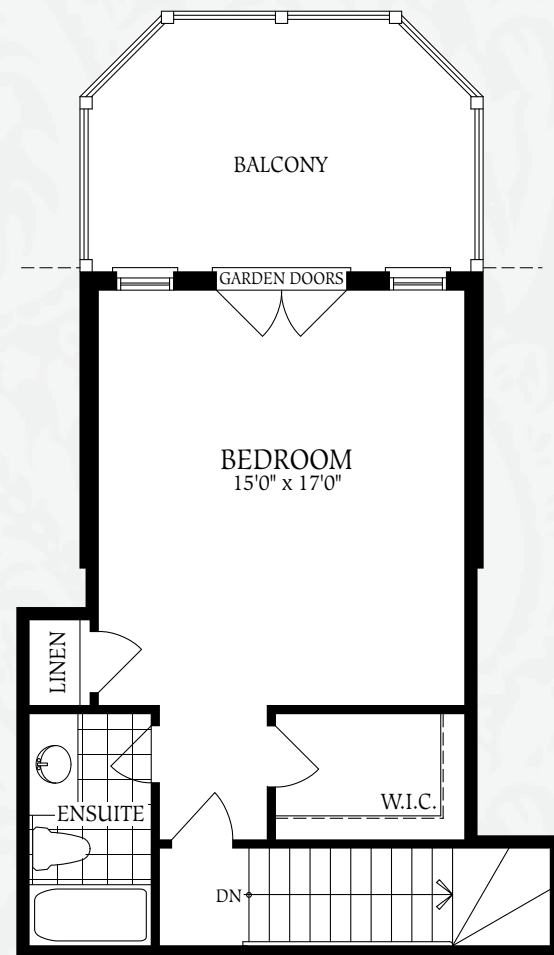
INCLUDES 117 SQ.FT. OF FINISHED BASEMENT



# THE PRINCESS

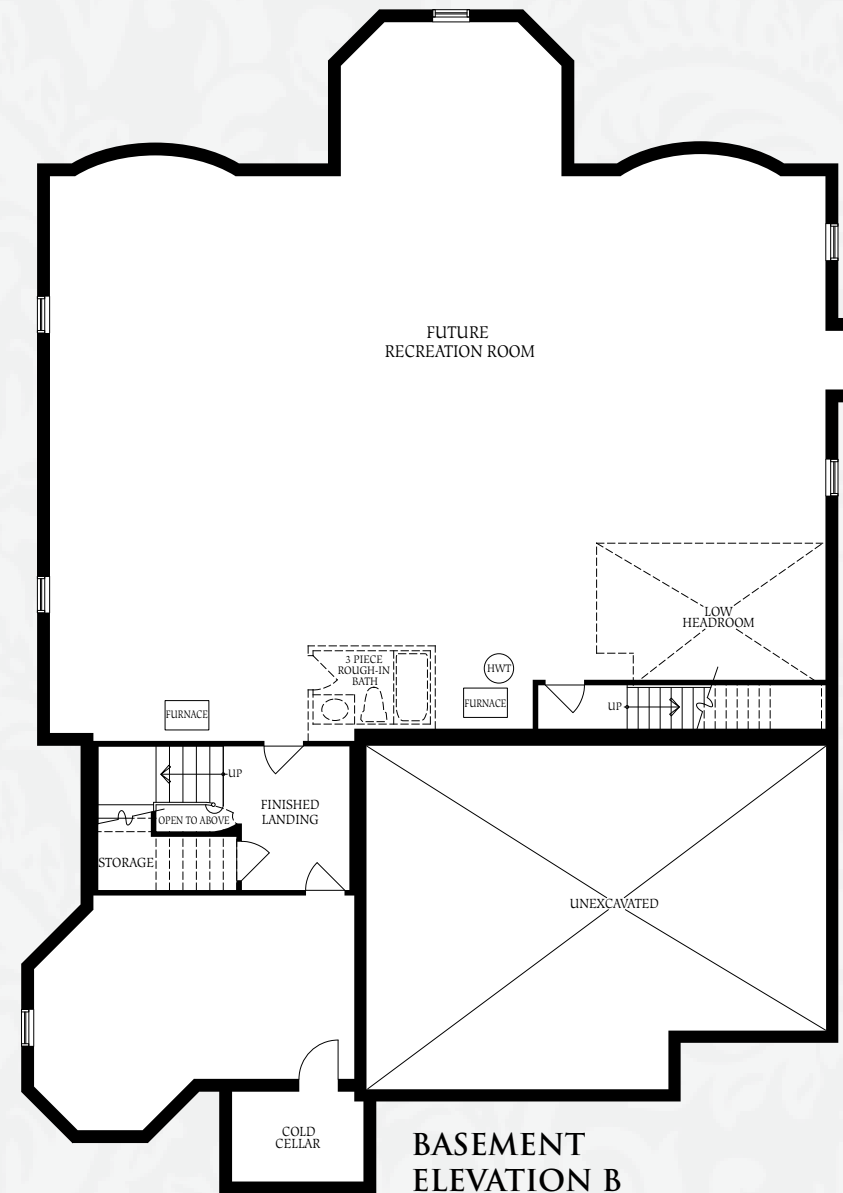


OPTIONAL LOFT

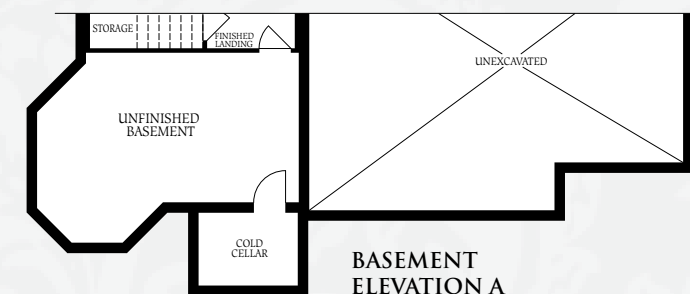


OPTIONAL LOFT PLAN WITH BEDROOM 5

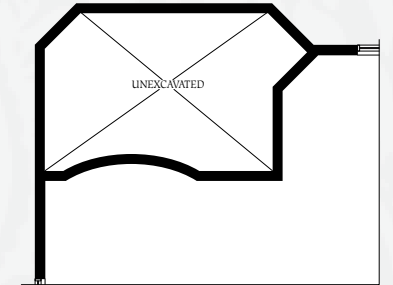
TOTAL SQUARE FOOTAGE WITH LOFT:  
 ELEVATION A: 6,667 SQ.FT.  
 ELEVATION B: 6,683 SQ.FT.



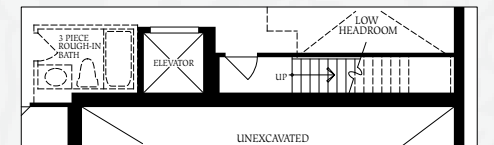
BASEMENT ELEVATION B



BASEMENT ELEVATION A



BASEMENT LAYOUT FOR OPTIONAL LOGGIA



BASEMENT WITH OPTIONAL ELEVATOR