

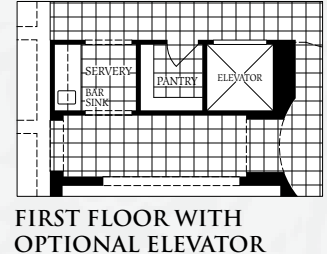
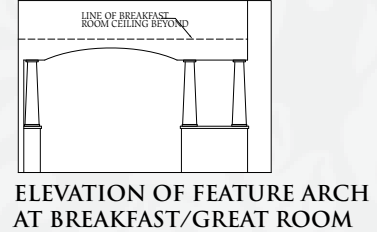
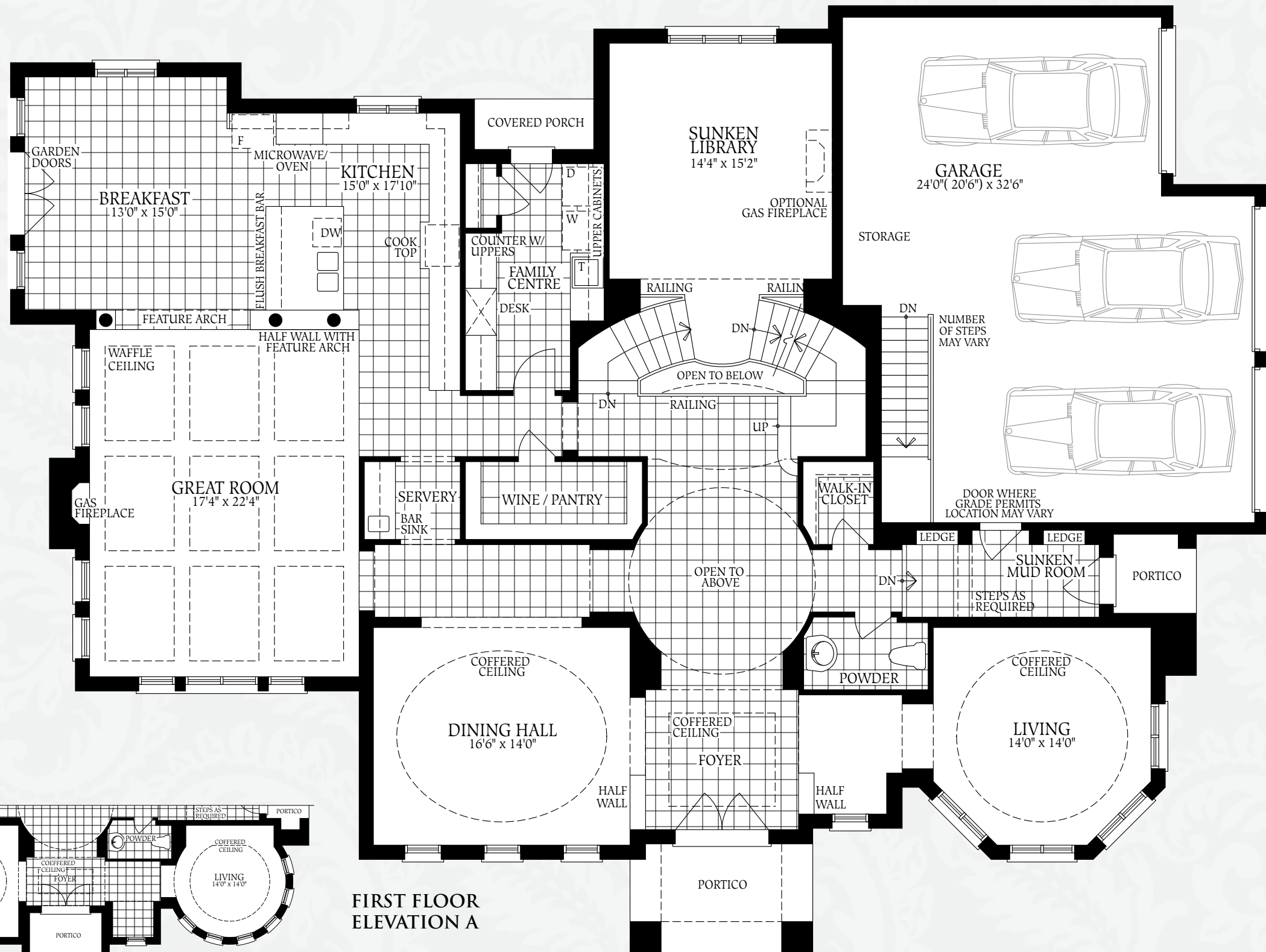
THE TRILLION

5,603 SQ.FT. - ELEV. B

INCLUDES 155 SQ.FT. OF FINISHED BASEMENT

5,620 SQ.FT. - ELEV. B

INCLUDES 141 SQ.FT. OF FINISHED BASEMENT

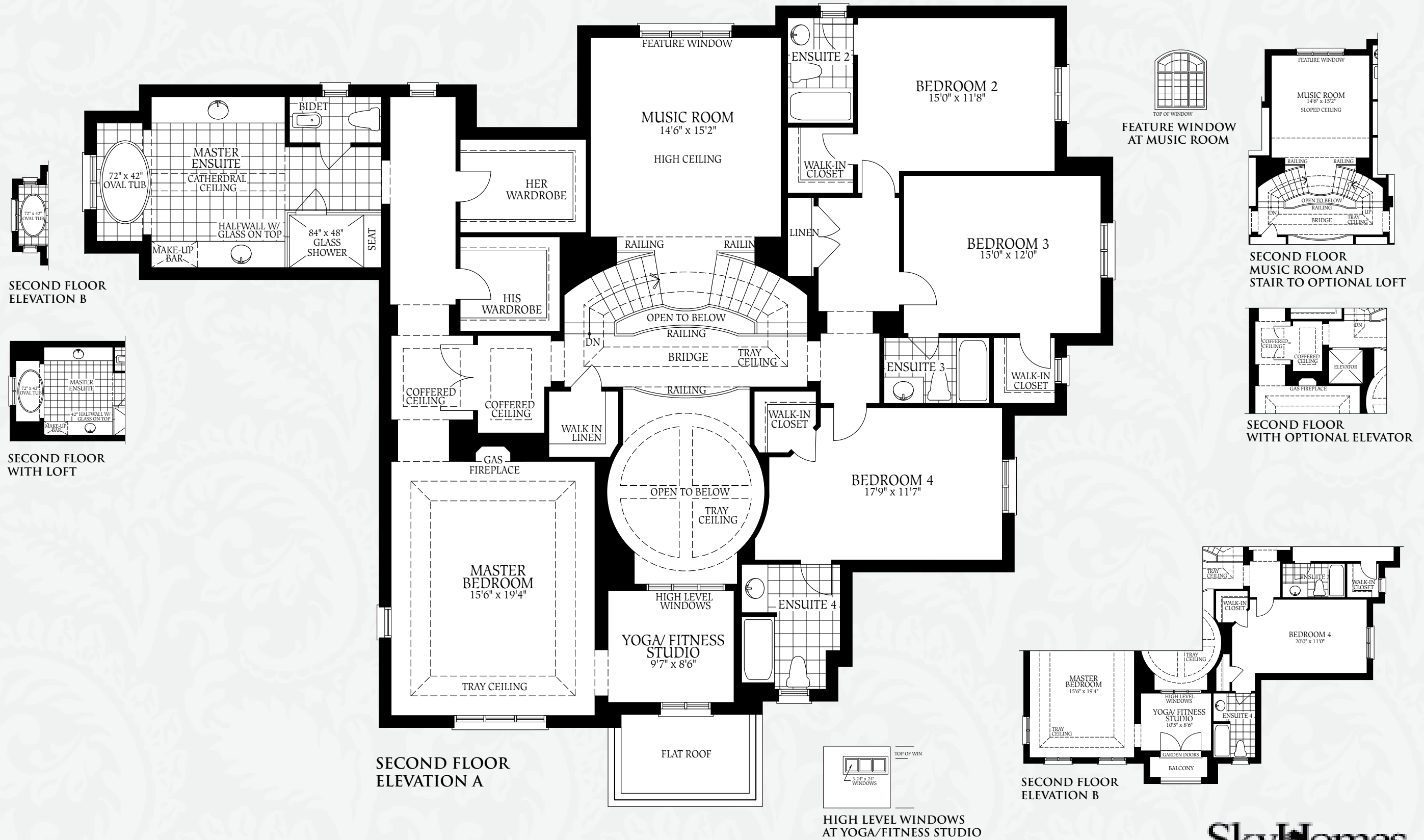


FIRST FLOOR ELEVATION B

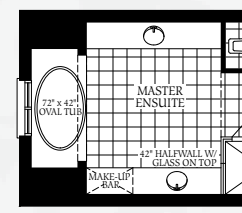
FIRST FLOOR ELEVATION A

Note: Orientation of home may be reversed and purchaser agrees to accept the same. Steps may vary at any exterior entrance ways due to grading variance. Actual usable floor space may vary from stated floor area. All renderings are artist's concept. Dimensions, specifications and architectural detailing are subject to minor modifications. Structural post not shown in basement plans. Unit setback and roofline may vary due to sitting. All options shown are upgrades. E. & O.E. April 2012

THE TRILLION



SECOND FLOOR
ELEVATION B

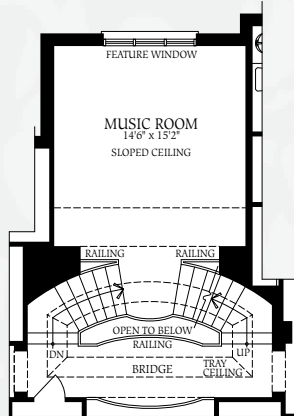


SECOND FLOOR
WITH LOFT

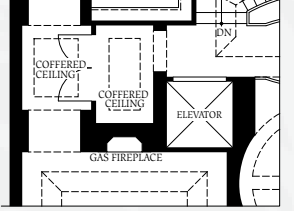
SECOND FLOOR
ELEVATION A



FEATURE WINDOW
AT MUSIC ROOM



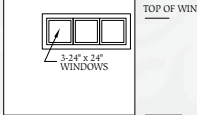
SECOND FLOOR
MUSIC ROOM AND
STAIR TO OPTIONAL LOFT



SECOND FLOOR
WITH OPTIONAL ELEVATOR



SECOND FLOOR
ELEVATION B



HIGH LEVEL WINDOWS
AT YOGA/FITNESS STUDIO

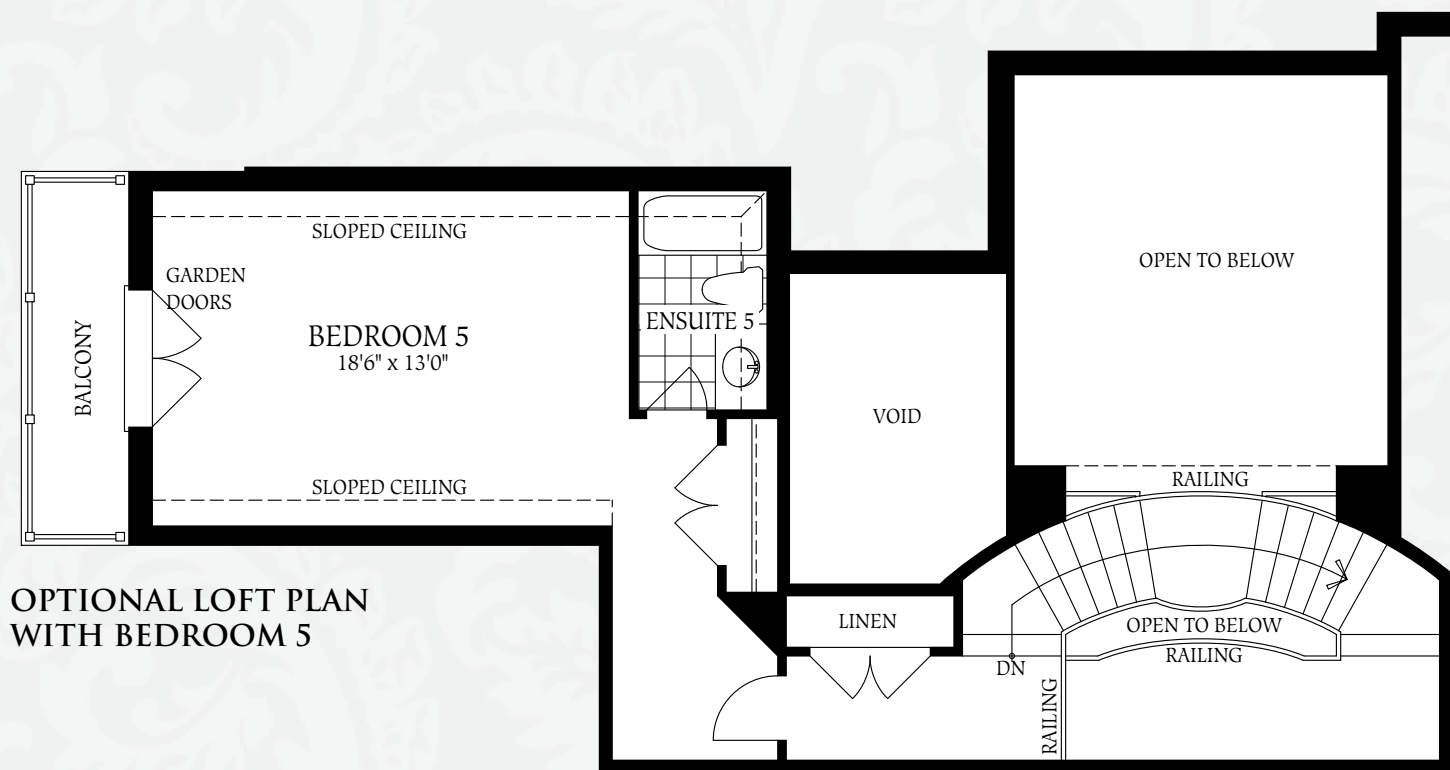
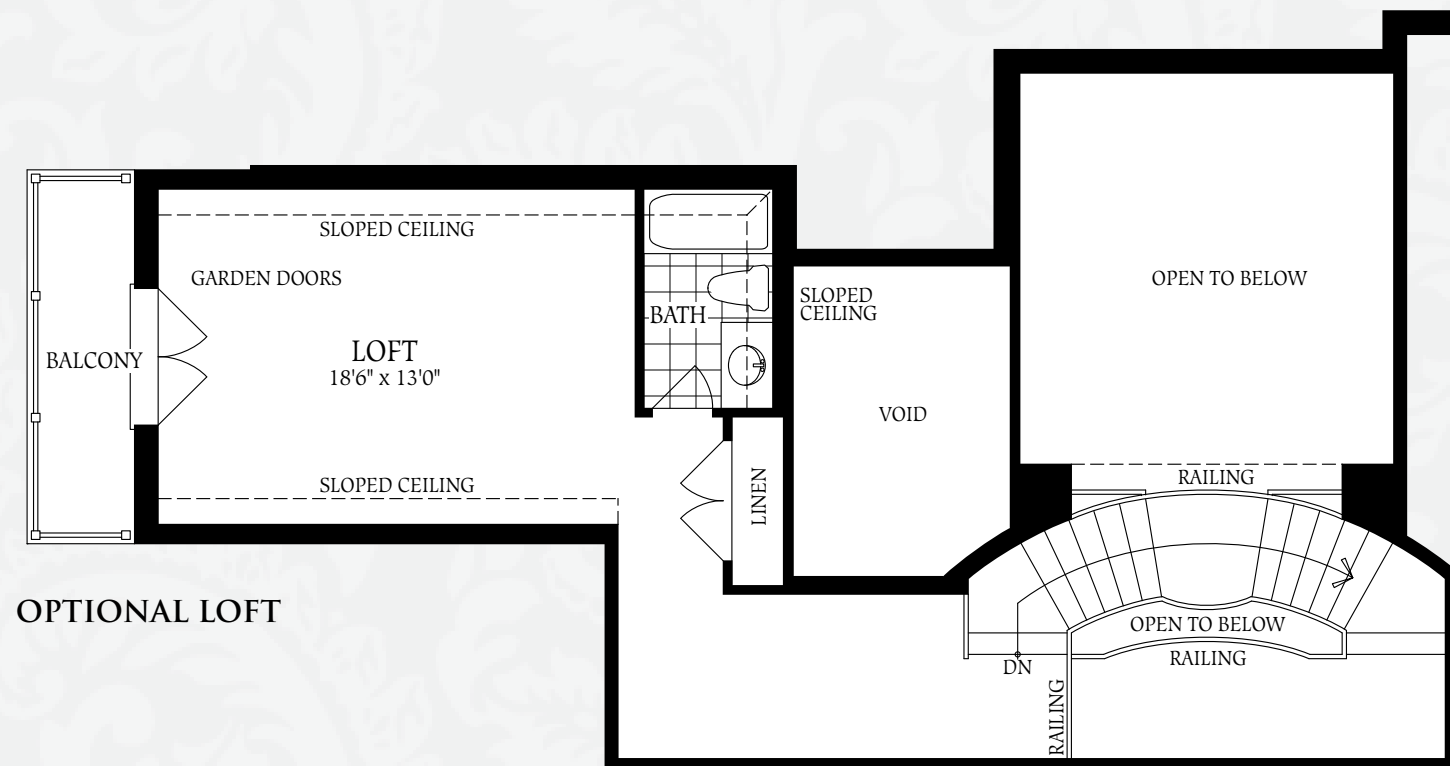
THE TRILLION

5,603 SQ.FT. - ELEV. B

INCLUDES 155 SQ.FT. OF FINISHED BASEMENT

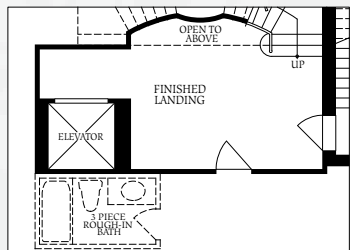
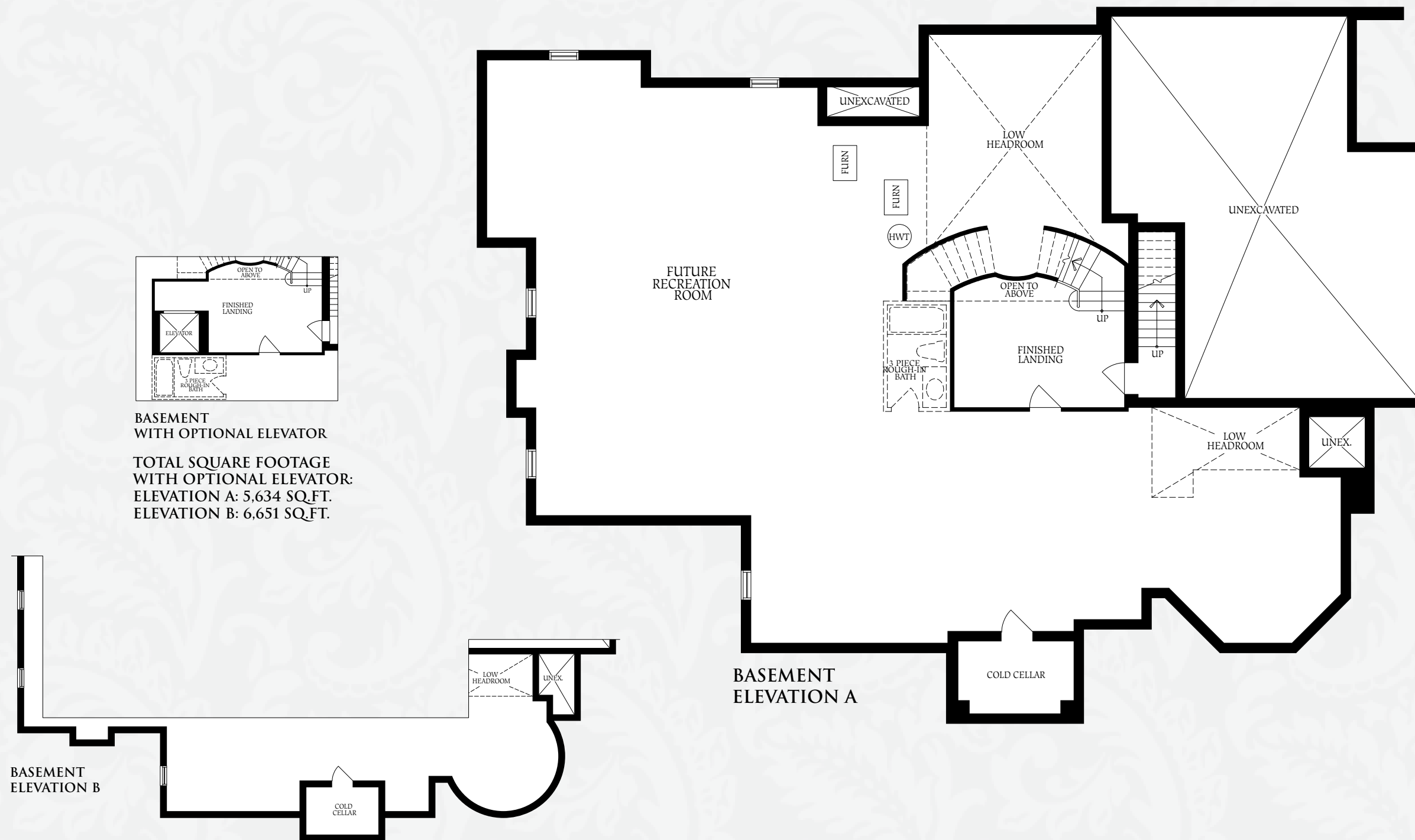
5,620 SQ.FT. - ELEV. B

INCLUDES 141 SQ.FT. OF FINISHED BASEMENT



TOTAL SQUARE FOOTAGE WITH LOFT:
ELEVATION A: 6,127 SQ.FT.
ELEVATION B: 6,149 SQ.FT.

TOTAL SQUARE FOOTAGE WITH LOFT AND OPTIONAL ELEVATOR:
ELEVATION A: 6,158 SQ.FT.
ELEVATION B: 6,180 SQ.FT.



BASEMENT WITH OPTIONAL ELEVATOR
 TOTAL SQUARE FOOTAGE WITH OPTIONAL ELEVATOR:
 ELEVATION A: 5,634 SQ.FT.
 ELEVATION B: 6,651 SQ.FT.