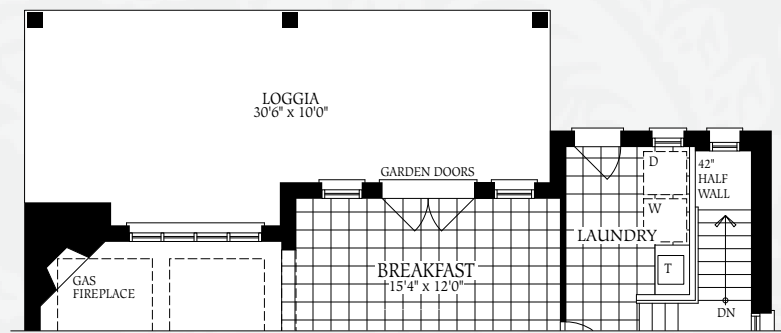


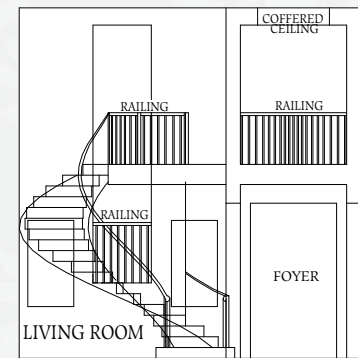
THE BRILLIANT

4,457 SQ.FT. - ELEV. A

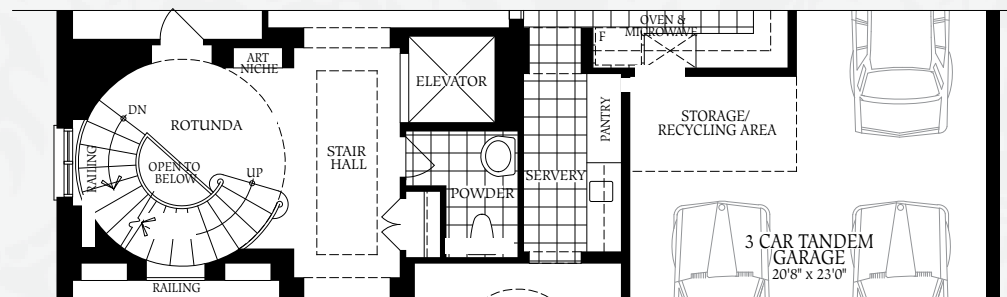
INCLUDES 102 SQ.FT. OF FINISHED BASEMENT



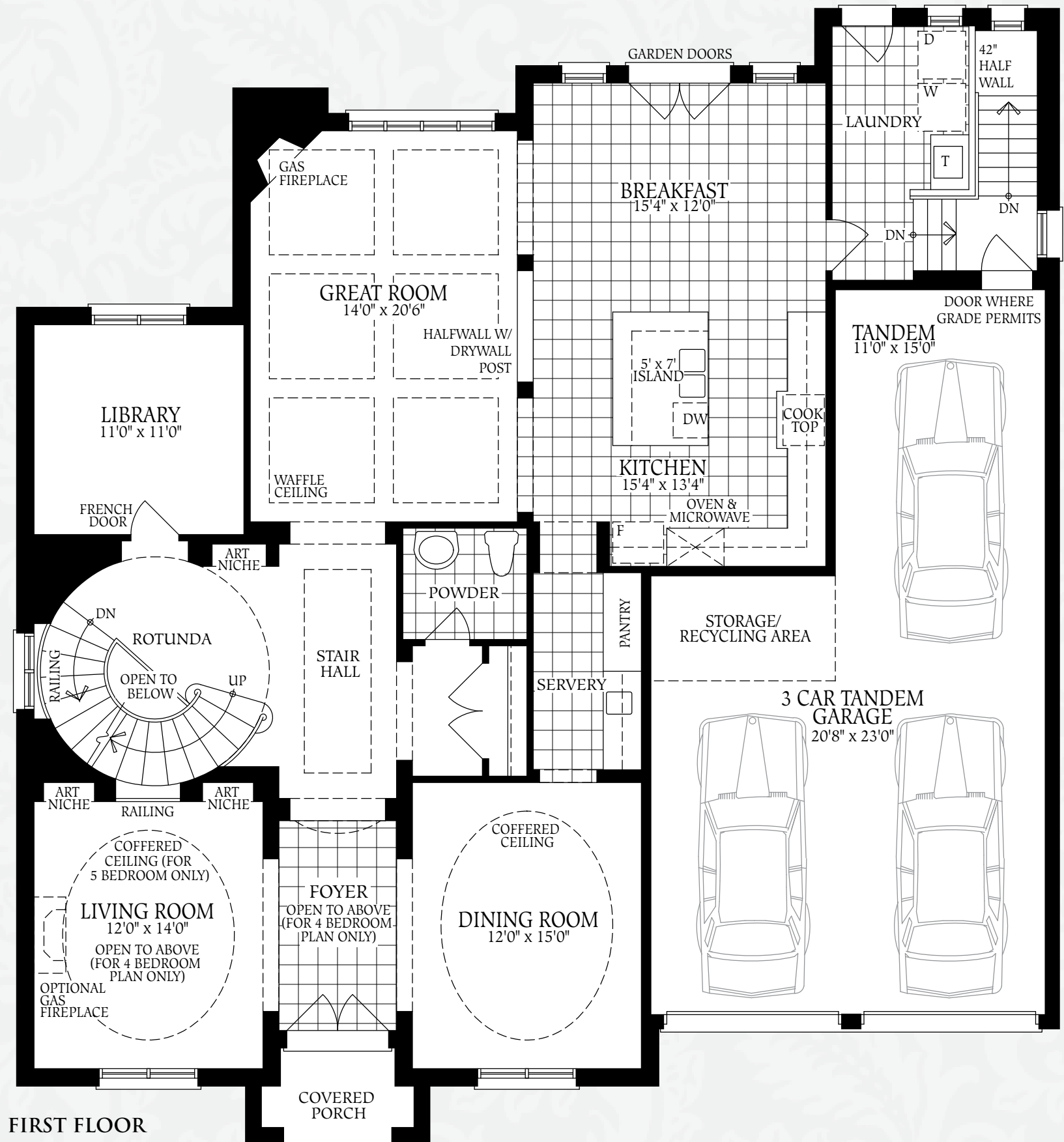
FIRST FLOOR WITH OPTIONAL LOGGIA



VIEW OF LIVING ROOM AND FOYER (FOR STANDARD 4 BEDROOM PLAN ONLY)

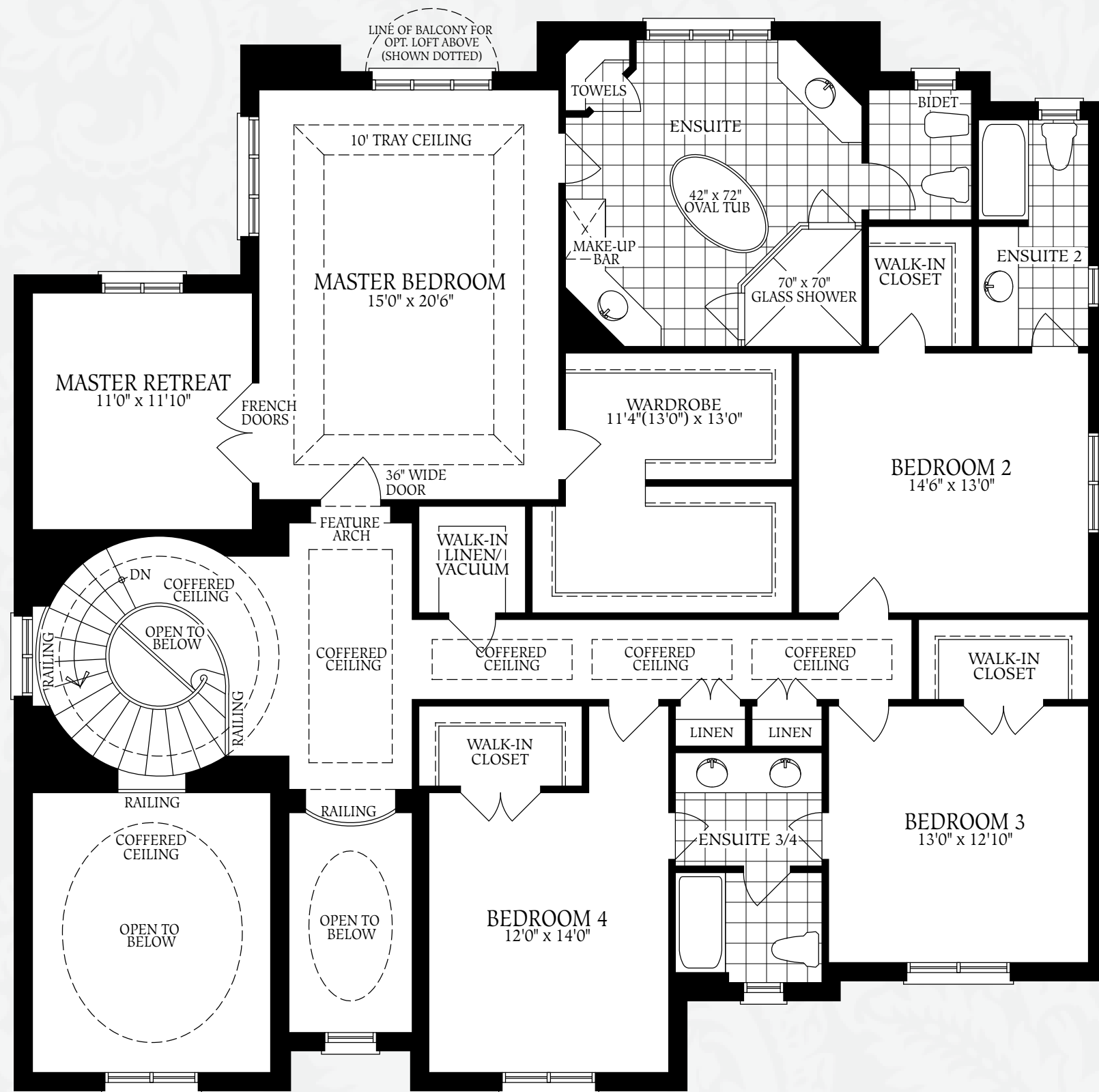


FIRST FLOOR WITH OPTIONAL ELEVATOR

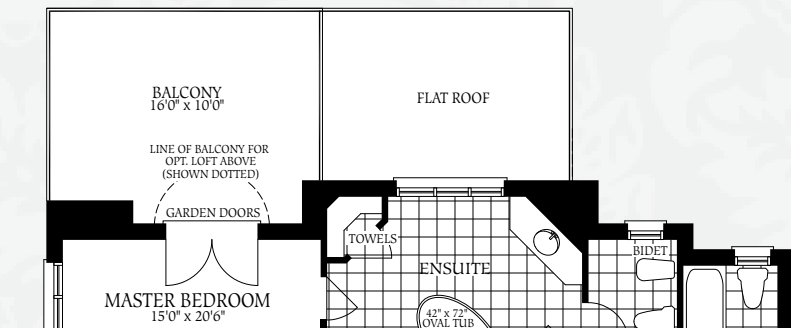


FIRST FLOOR

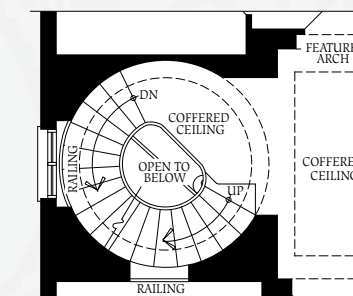
THE BRILLIANT



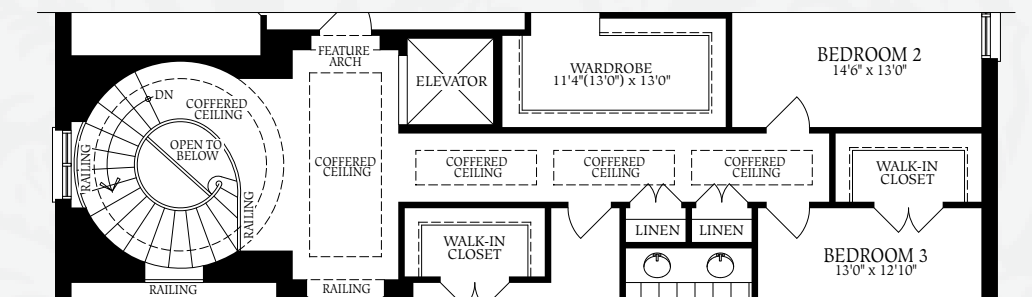
SECOND FLOOR



SECOND FLOOR WITH OPTIONAL BALCONY



SECOND FLOOR LAYOUT FOR OPTIONAL LOFT

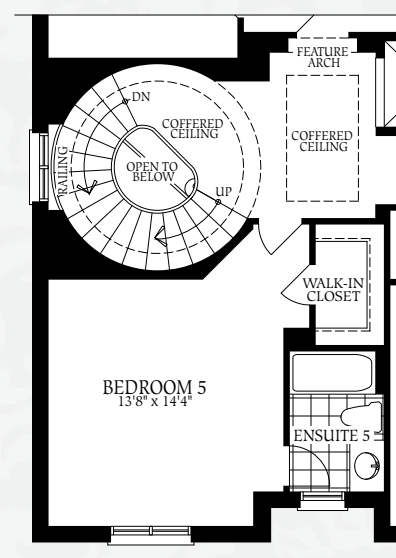


SECOND FLOOR WITH OPTIONAL ELEVATOR

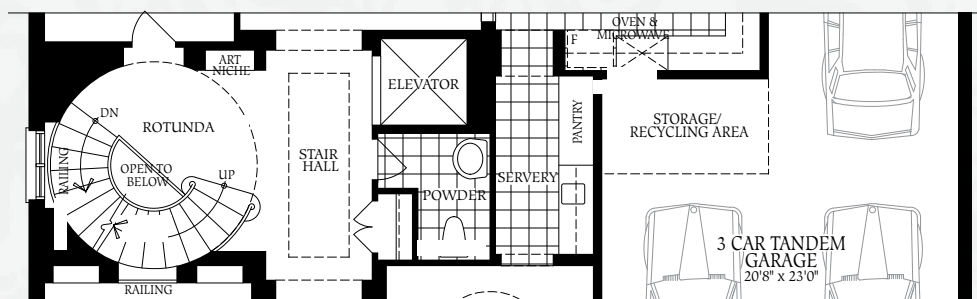
THE BRILLIANT

4,457 SQ.FT. - ELEV. A

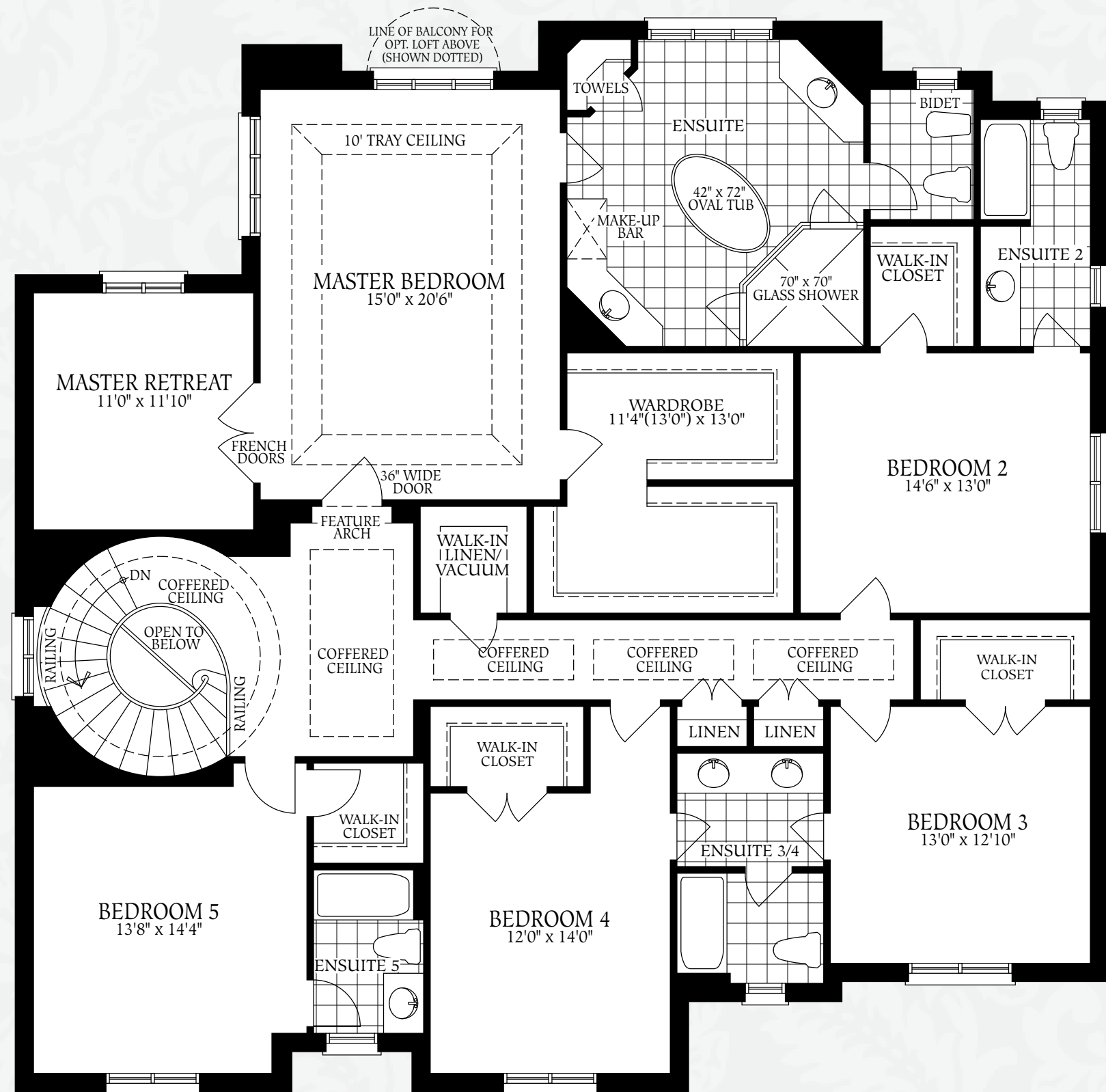
INCLUDES 102 SQ.FT. OF FINISHED BASEMENT



OPTIONAL 5 BEDROOM SECOND FLOOR WITH OPTIONAL LOFT



OPTIONAL 5 BEDROOM SECOND FLOOR WITH OPTIONAL ELEVATOR

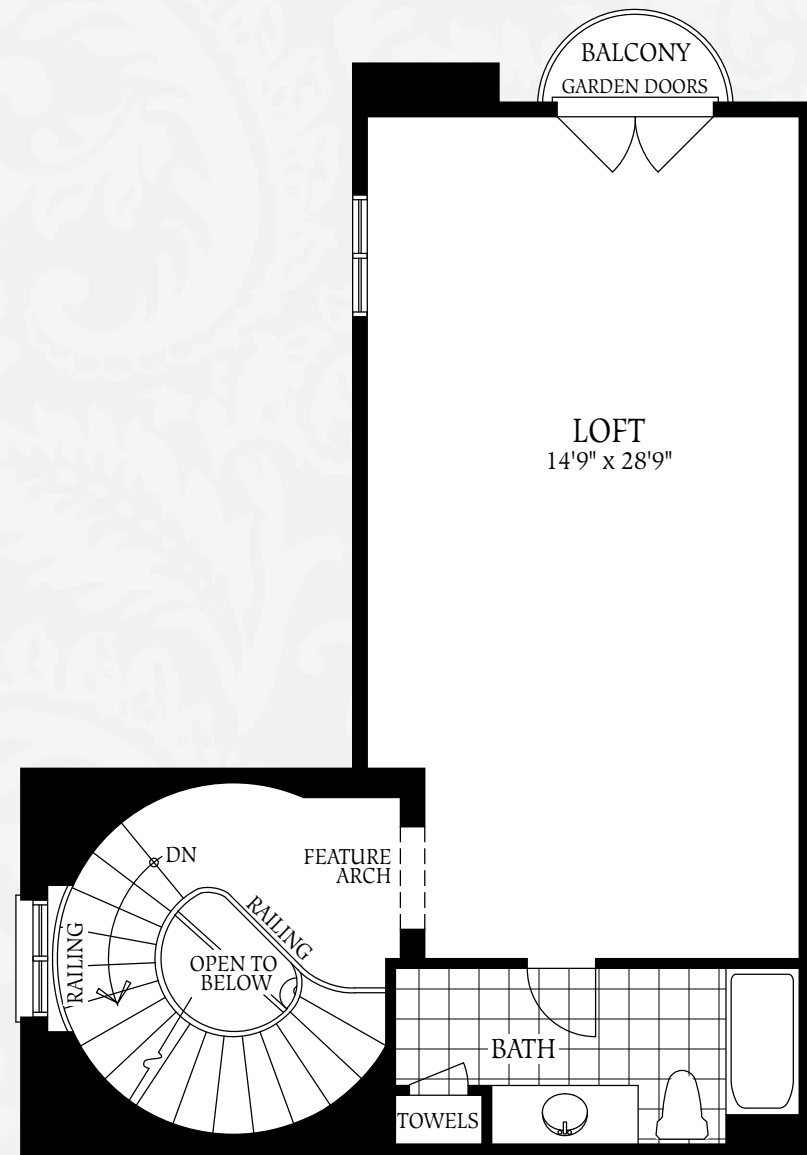


OPTIONAL 5 BEDROOM SECOND FLOOR
TOTAL SQUARE FOOTAGE: 4,689 SQ.FT.



Note: Orientation of home may be reversed and purchaser agrees to accept the same. Steps may vary at any exterior entrance ways due to grading variance. Actual usable floor space may vary from stated floor area. All renderings are artist's concept. Dimensions, specifications and architectural detailing are subject to minor modifications. Structural post not shown in basement plans. Unit setback and roofline may vary due to sitting. All options shown are upgrades. E. & O.E. April 2012

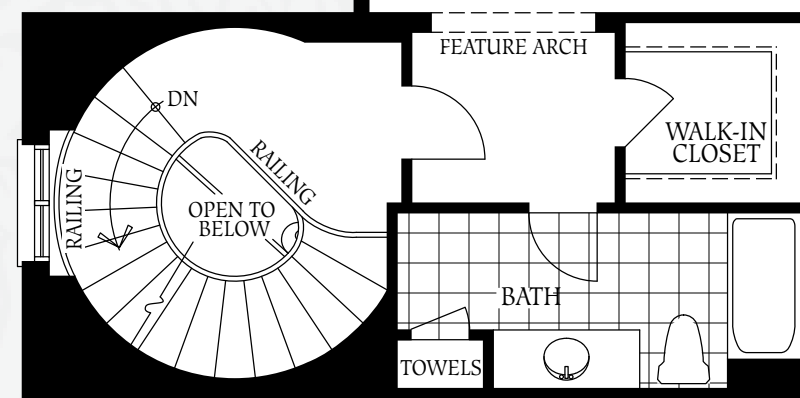
THE BRILLIANT



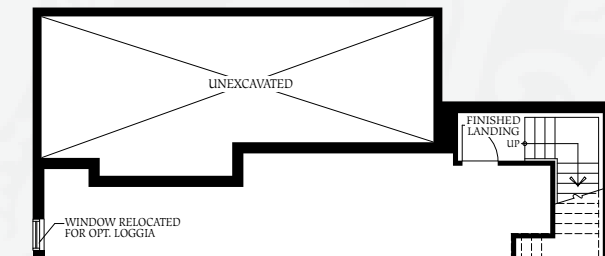
OPTIONAL LOFT

TOTAL SQUARE FOOTAGE WITH LOFT:
5,160 SQ.FT.

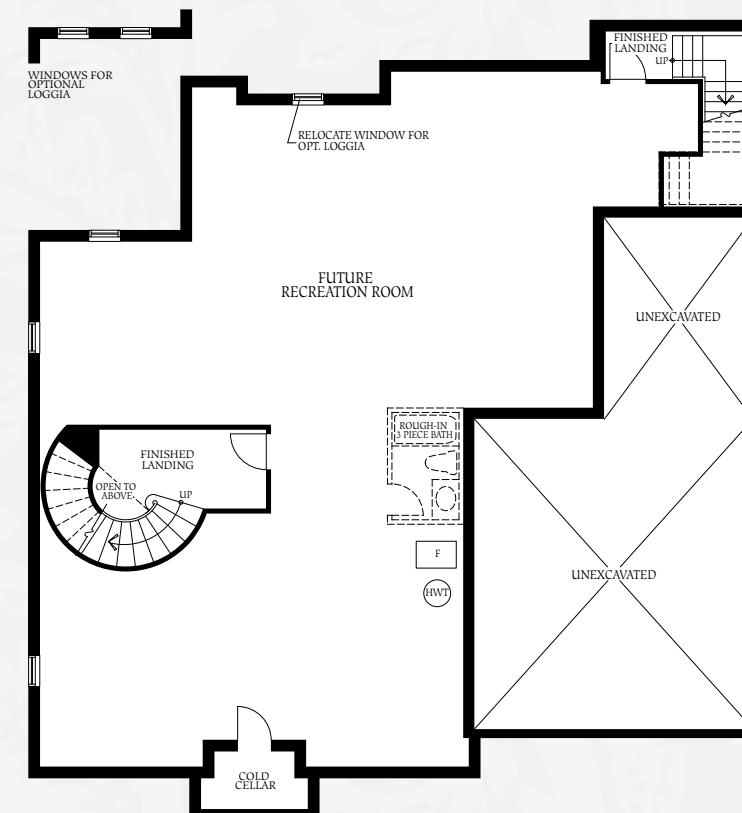
TOTAL SQUARE FOOTAGE WITH LOFT
AND OPTIONAL 5 BEDROOM
SECOND FLOOR:
5,392 SQ.FT.



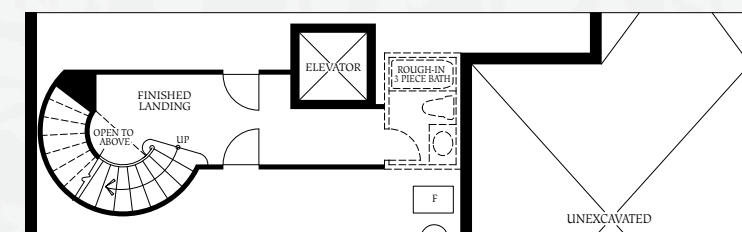
OPTIONAL LOFT PLAN
WITH BEDROOM



BASEMENT FOR
OPTIONAL LOGGIA LAYOUT



BASEMENT



BASEMENT WITH OPTIONAL ELEVATOR